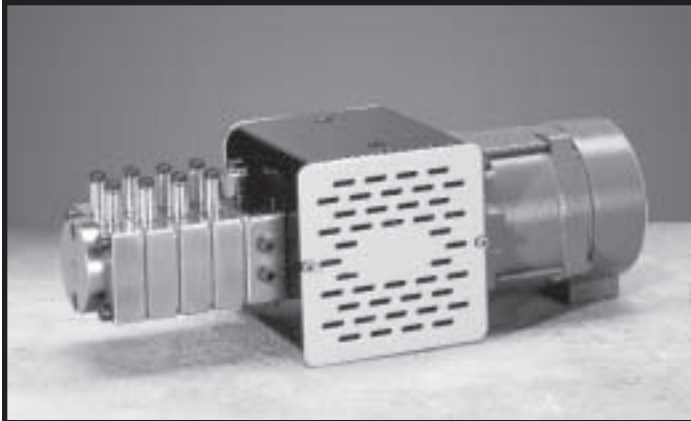


Zenith® Pumps

Spin Finish Gear Pumps

For precise, pulseless, repeatable flow control in a wide variety of fluids when high precision is critical



Spin Finish Gear Pump System

Benefits and Features:

Longer Life: Proprietary High Vanadium Stainless Steels and other best-in-class materials are used to dramatically increase the wear and corrosion resistance of the pump.

Uniform Accuracy: The application of new design criteria insure that all the internal components wear uniformly over the life of the pump—no stream will loose its accuracy before any other.

Less Bubble Formation: The use of special Parker fittings, provide a constant port size from the pump, through the fitting and into the tubing, with a special O-ring seal to eliminate stagnation and air drawn bubble formation.

Reduced Bacterial Growth: The optimized internal porting eliminates fluid stagnation points where bacterial growth happens.

Easier Maintenance: Our registered deck design, removable seals, and optional color coded fittings and hoses, redefine "quick-n-easy" pump assembly.

Value: Long life, ease of maintenance, and improved product quality convert the affordable price into a great value!

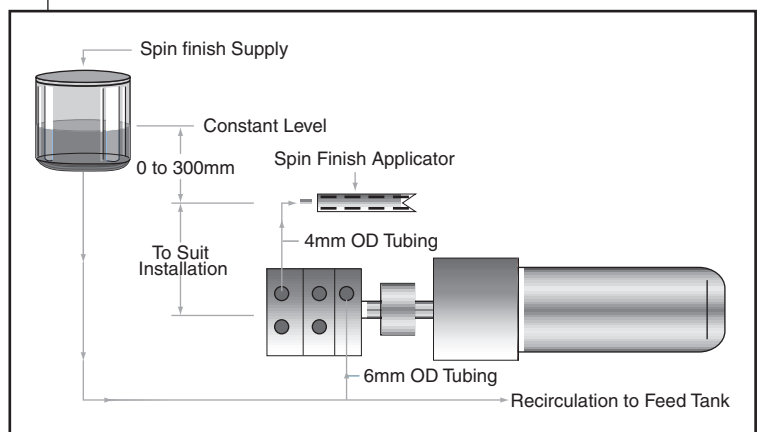
Applications:

Spin finish pumps are used to meter finish solutions in a precise, pulseless flow to be applied on man-made fibers such as polyester, nylon, polypropylene, acetate and rayon. Spin finish metering pumps are available in a wide range of capacities and number of discharge ports and are suitable for most man-made fiber finishing solutions.

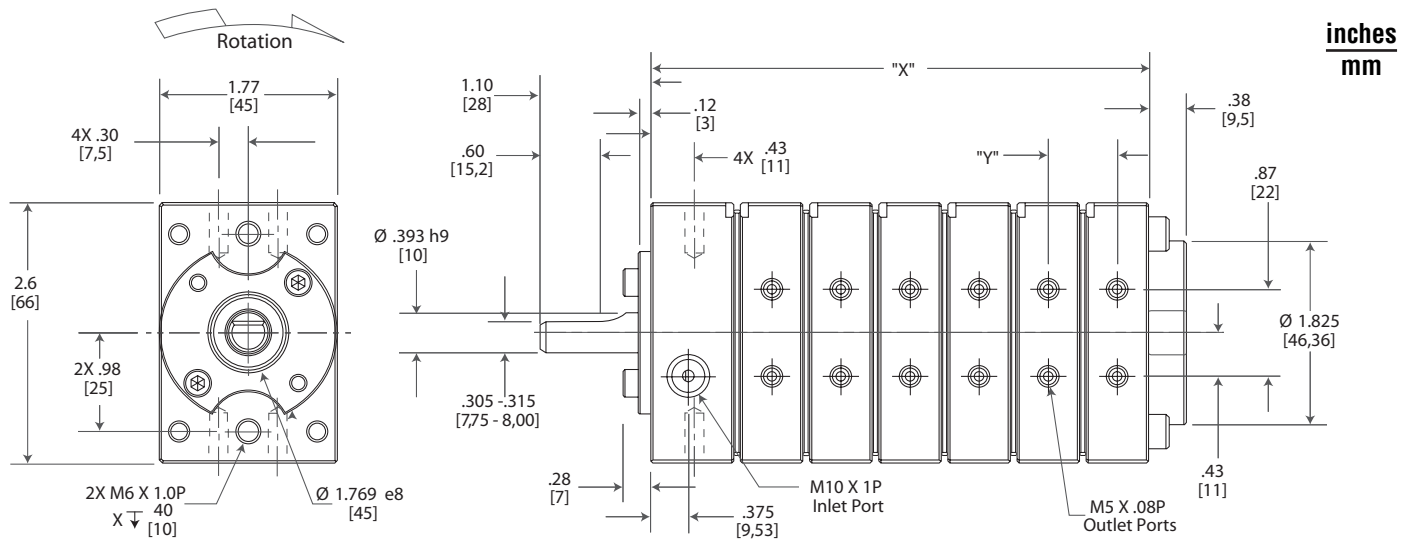
Specifications:

Pump Type:	Rotary external spur gear
Rotation:	Clockwise
Operating Speed:	10-100 rpm recommended. Contact factory for specific recommendation based on your application conditions
Temperature:	To 212°F (100°C)
Flow Rates:	0.03 to 1.2 cc/rev/port 2 to 12 discharge ports standard
Inlet:	7 psi maximum, flooded suction required. Differential pressure should be kept near zero for water emulsion finishes
Viscosity:	1 to 100 cp
Porting:	Plates port to same side. Parker Prestolok fitting adapters supplied for flexible tubing. Inlet - 6mm OD, Outlet - 4mm OD
Materials of Construction:	Proprietary High Vanadium Stainless Steel provides best-in-class corrosion and wear resistance. Seal and binder screws, alloy steel
Seal:	Stainless steel spring energized Nitrile lip seal standard

Typical Spin Finish Pump Installation



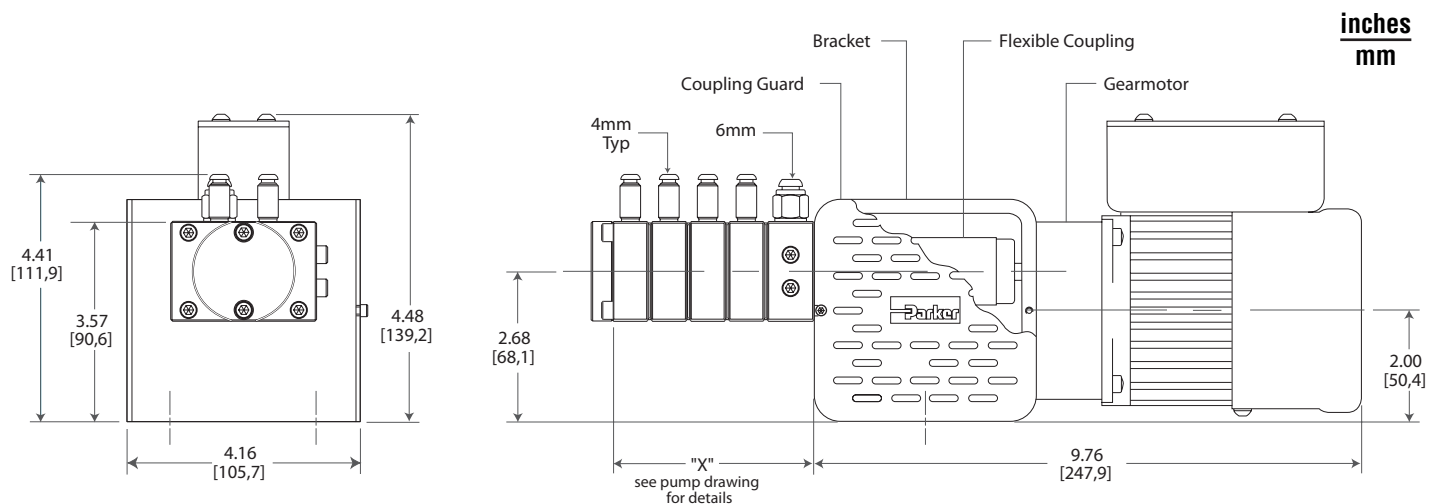
Dimensions



Standard Spin Finish Pump Models (other spin finish pump models available upon request)

PUMP TYPE	BFC-6250	BFF-6251	BFI-6252	BFL-6253	BFO-6254	BFR-6255
Number of streams	2-stream	4-stream	6-stream	8-stream	10-stream	12-stream
cc/rev	"Y" inches/mm	"X" inches/mm	"X" inches/mm	"X" inches/mm	"X" inches/mm	"X" inches/mm
0.03	0.669/17,0	1.50/38,1	2.17/55,1	2.84/72,1	3.51/89,1	4.18/106,1
0.05	0.669/17,0	1.50/38,1	2.17/55,1	2.84/72,1	3.51/89,1	4.18/106,1
0.08	0.698/17,5	1.52/38,6	2.21/56,1	2.90/73,6	3.59/91,1	4.28/108,6
0.16	0.748/19,0	1.58/40,1	2.33/59,1	3.07/78,1	3.82/97,1	4.57/116,1
0.3	0.748/19,0	1.58/40,1	2.33/59,1	3.07/78,1	3.82/97,1	4.57/116,1
0.6	0.846/21,5	1.68/42,6	2.52/64,1	3.37/85,6	4.22/107,1	5.06/128,6
1.2	1.063/27,0	1.89/48,1	2.96/75,1	4.02/102,1	5.08/129,1	---

SF-6000 Spin Finish Pump Motor Drive Assembly



ISO 9001: 2000 Registered



A Colfax Business Unit

Zenith Pumps

1710 Airport Road

Monroe, NC 28110

Phone: 704-289-6511 • Fax: 704-289-9273

zenithpumps@colfaxcorp.com • www.zenithpumps.com

© Copyright 2002 Zenith Pumps Spin Finish EDS 10/04