

SALES & ENGINEERING DATA

RATIO
SERIES: 1:1

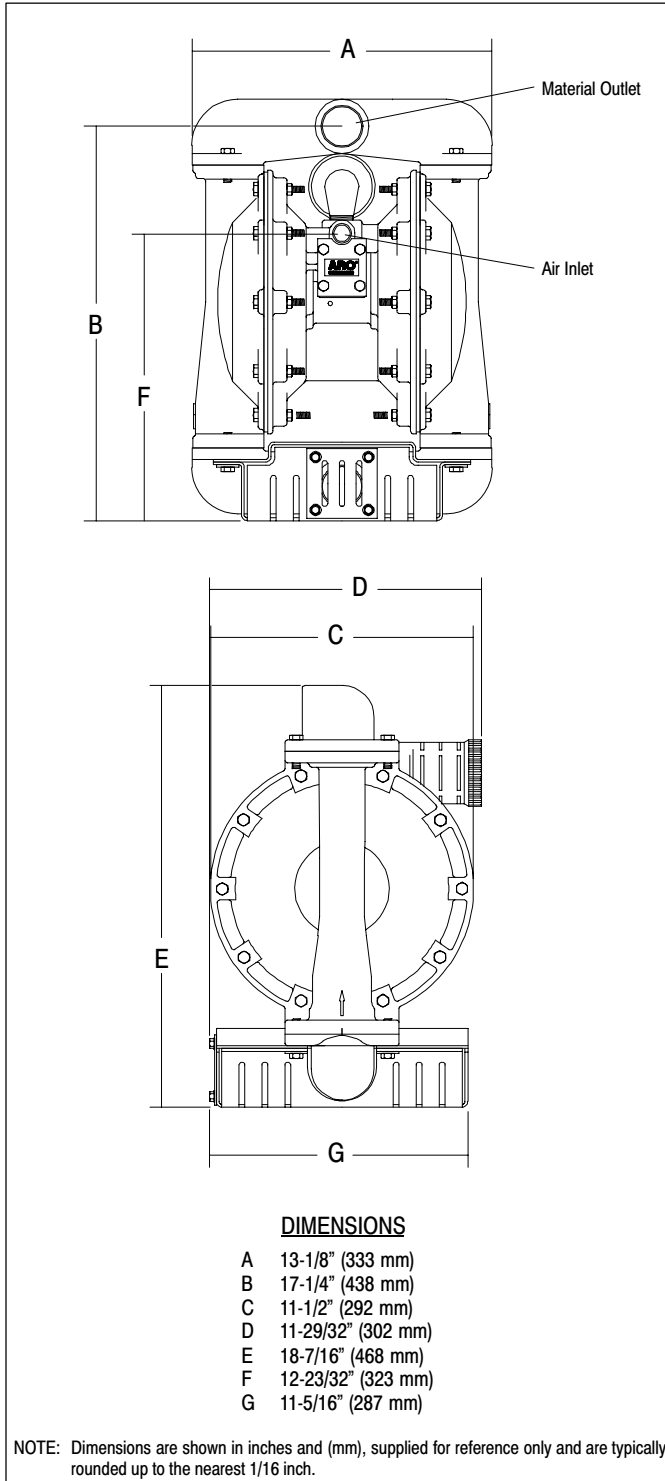
FLUID PSI
RANGE: 20 - 120

PS15A-X

1-1/2" METALLIC DIAPHRAGM PUMP

RELEASED: 7-14-00
REVISED:
S-1196

DIMENSIONAL DATA



SPECIFICATIONS

CONSTRUCTION

Model Series PS15A-X
Pump Type Metallic, Air Operated, Screened
Inlet, Double Diaphragm
Ratio 1:1
Material Outlet
models PS15A-AAS-PAA 1-1/2 - 11-1/2 N.P.T. - 1 (female)
models PS15A-BAS-PAA 1-1/2 - 11 BS Rp (female)
Air Inlet 1/2 - 14 N.P.T.F. - 1 (female)
Air Exhaust 3/4 - 14 N.P.T.F. - 1 (female)
Weight 51 lbs (23.1 kgs)
Air Section Service Kit 637118-C
Fluid Section Service Kit 637124-EB

PERFORMANCE

Air Inlet Pressure Range 20 - 120 p.s.i. (1 - 8.3 bar)
Fluid Pressure Range 20 - 120 p.s.i. (1 - 8.3 bar)
Maximum Flow Rate 90 g.p.m. (340.7 l.p.m.)
Maximum Particle Size 1/4" dia. (6.4 mm)
Maximum Temperature Limits 35° to 150°F (2° to 66°C)
Displacement / Cycle @ 100 p.s.i. .. 0.64 gal (2.42 l)
Noise Level @ 70 p.s.i. - 60 cpm① .. 77.7 db(A)②

① Tested with 93139 Muffler installed.

② The pump sound pressure level has been updated to an Equivalent Continuous Sound Level (L_{Aeq}) to meet the intent of ANSI S1. 13-1971, CAGI-PNEUROP S5.1 using four microphone locations.

ACCESSORIES:

65010 Neoprene "O" Ring Air Motor Kit
65764 Viton "O" Ring Air Motor Kit
66084-1 Air Line Kit
637155 Abrasion Resistant Conversion Kit



INGERSOLL-RAND COMPANY
P.O. BOX 151 • ONE ARO CENTER • BRYAN, OHIO 43506-0151
☎ (419) 636-4242 • FAX (419) 633-1674

©2000 • PRINTED IN U.S.A.

INGERSOLL-RAND
FLUID PRODUCTS

PERFORMANCE CURVES

PS15A-X 1-1/2" METALLIC DIAPHRAGM PUMP

