

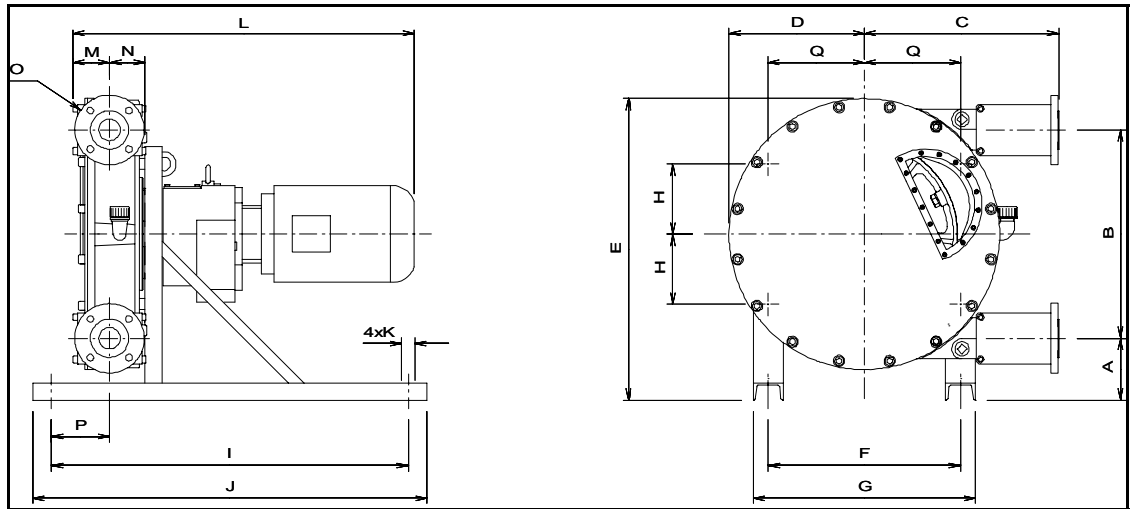


Model: ALHX 80

Technical Datasheet

24.10.2008

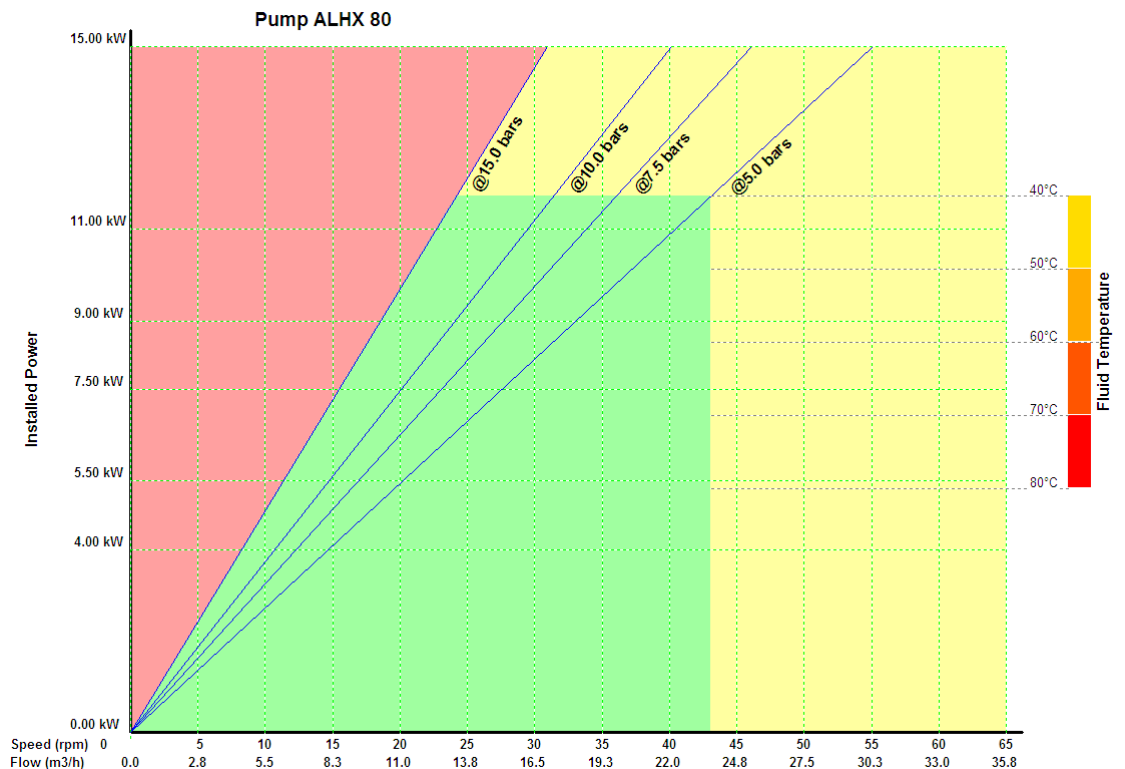
Weight 600.0Kg	
L.Hose 2400.0 mm	
D.Hose 80.0 mm	
Dim.	mm
A	158.00
B	746.00
C	604.00
D	473.00
E	1004.00
F	580.00
G	680.00
H	290.00
I	1150.00
J	1250.00
K	19.00
L	-
M	129.00
N	133.00
O	Flange DN80 PN16
P	167.00
Q	290.00



Shims Table

Pressure in bar (psi)	Speed in rpm	Number of shims
dP < 5 (72,5)	0 a 25	0
	25 a 65	0
5 (72,5) < dP < 7,5 (108,75)	0 a 25	2
	25 a 46	1
7,5 (108,75) < dP < 10	0 a 25	3
	25 a 40	2
10 (145) < dP < 15 (217,5)	0 a 25	4
	25 a 31	3

- Continuous
- *Intermittent
- Forbidden



ALBIN PUMP SAS
 ZAC de Fontgrave
 F-26740 Montboucher
 Tél: + 33 4 75 90 92 92
 Fax: + 33 4 75 90 92 40
 www.albinpump.fr
 www.albinpump.com

*Intermittent use is 2 hours max. continuous duty followed by 1 hour stop