

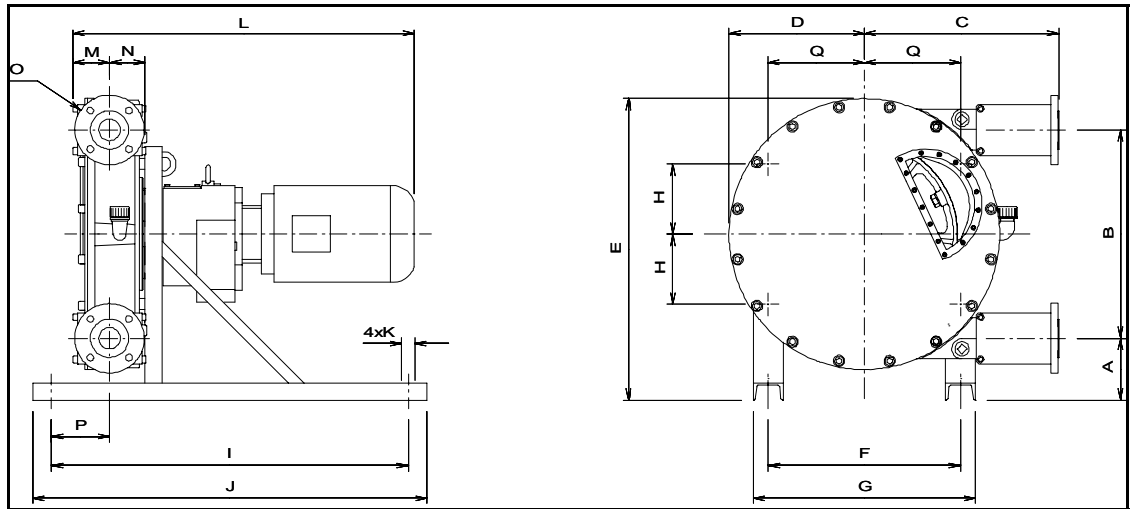
# Model: ALH 65



24.10.2008

## Technical Datasheet

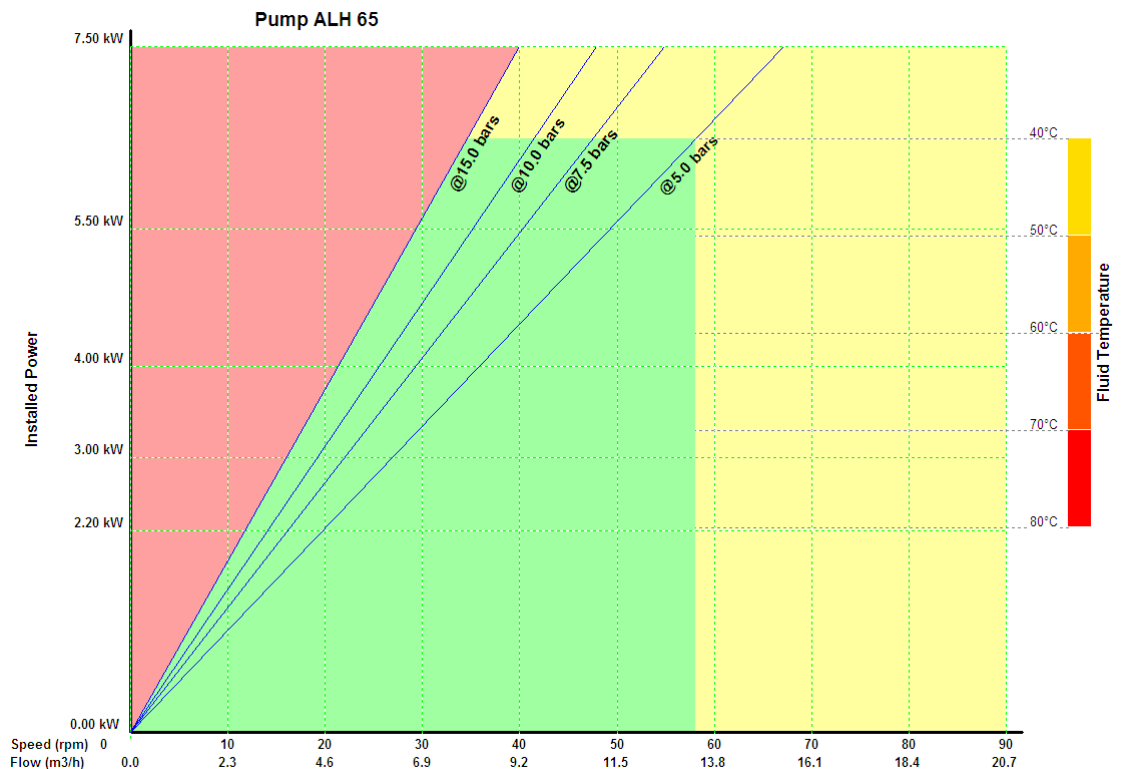
<b>Weight 315.0Kg</b>	
<b>L.Hose 1950.0 mm</b>	
<b>D.Hose 60.0 mm</b>	
Dim.	mm
A	164.50
B	554.00
C	517.50
D	360.00
E	801.50
F	510.00
G	593.00
H	186.50
I	950.00
J	1050.00
K	19.00
L	-
M	97.50
N	95.00
O	Flange DN65 PN16
P	155.00
Q	256.50



Shims Table

Pressure in bar (psi)	Speed in rpm	Number of shims
dP < 5 (72,5)	0 a 30	0
	30 a 90	0
5 (72,5) < dP < 7,5 (108,75)	0 a 30	2
	30 a 55	1
7,5 (108,75) < dP < 10	0 a 30	3
	30 a 47,5	2
10 (145) < dP < 15 (217,5)	0 a 30	4
	30 a 40	3

- Continuous
- \*Intermittent
- Forbidden



ALBIN PUMP SAS  
 ZAC de Fontgrave  
 F-26740 Montboucher  
 Tél: + 33 4 75 90 92 92  
 Fax: + 33 4 75 90 92 40  
 www.albinpump.fr  
 www.albinpump.com

\*Intermittent use is 2 hours max. continuous duty followed by 1 hour stop